

# Canal Navigation Maintenance Program Update

Town Commission Workshop  
January 21, 2025



# Economics Of Boating

\$31.3 Billion Annual Economic Impact In Florida (2023)

1,004,240 Registered Boats in Florida (2021)

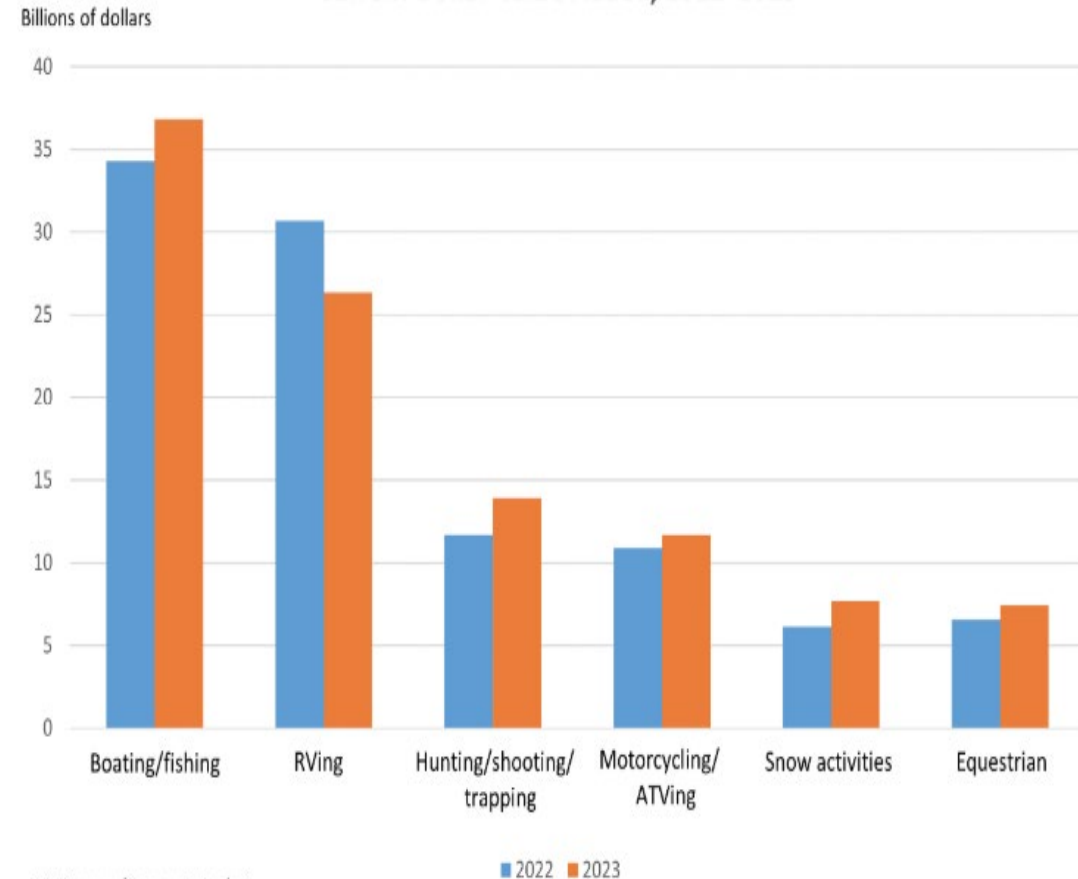
26,599 in Manatee County (2023 FL Highway Safety and Motor Vehicles)

24,760 in Sarasota County (2023 FL Highway Safety and Motor Vehicles)

95% are Smaller than 26ft (Boat Survey indicates same trend on Longboat Key)

Support Local Marinas, Waterfront Restaurants, Parks, Charters and Guides

Chart 3. Conventional Outdoor Recreation Activities, Current Dollar Value Added, 2022–2023





# Order of Brief

- 1. Programmatic Updates**
  - Will include brief discussion of apportionment at the end
- 2. BUDM Updates**
- 3. Public Outreach Development**
- 4. Future Tasks and Assignments**

# Programmatic Updates



# Programmatic Updates

Tasks	Status
Continued Program Development	
Maintenance OPCC	Complete
Seagrass Mitigation Inventory	Underway
District Delineation	Complete
Website Development & Public Tool Hosting	Initiated
Assessment Program Formulation	
Assessment Program	Underway
Technical Support	Underway
Subaqueous Pipeline Support (BUDM)	
Canal BUDM for Force Main Install	Underway



# Website Development

- Initial stages of website development for public use.

## Tools to be included:

- General project information and updates
- Basic program statistics & definitions
- Interactive map
- Canal sheets

## May be included in the future:

- Project timelines & construction schedule
- Assessment calculator
- Boat view



# Seagrass Mitigation Inventory

TOWN OF LONGBOAT KEY

- Important to understand which canals have been mitigated for and which still require mitigation.

Note: Once seagrass mitigation for a canal has been completed, maintenance dredging can occur without mitigating again.

- Suitable dredge material in previously mitigated canals can be used for BUDM material on the Force Main project.
- Seagrass mitigation inventory is underway and will directly affect BUDM volume for the Force Main project.



# Boat View

- FLC is continuing to collect boat view (360 video) throughout the waterways.
- To date roughly 75% of the waterways have been captured.
  - Initial effort completed from 3/12/2024 – 3/14/2024
  - Continued efforts underway from 12/08/2024 to current



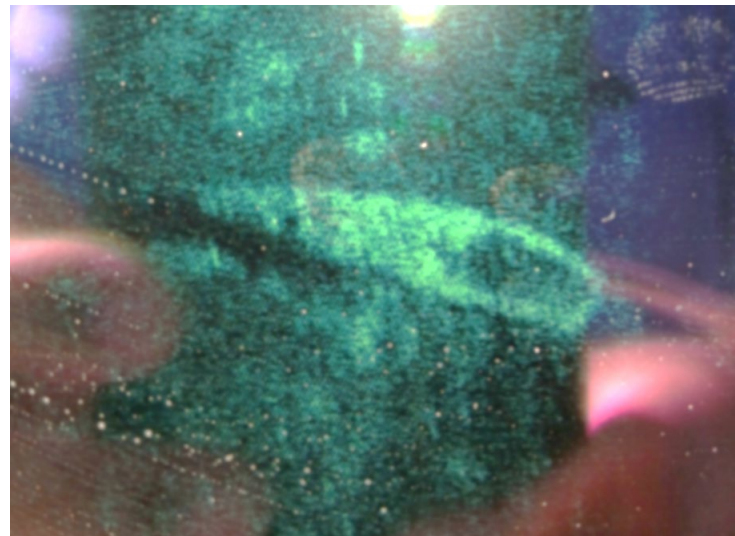




TOWN OF LONGBOAT KEY

# Observed Post Storm Canal Conditions

- High level of natural and man-made debris
- Shifted shoals
- Missing navigational signage
- Damage to mooring structures
- Sunken or derelict vessels





# Administrative Progress

- *Ad-Valorem* District Mechanism
  - Passed at the December meeting and submitted to the respective Counties.
- *Non-Ad Valorem* District Delineation (Direct Benefit Groups)
  - Development of meets and bounds - Underway
- Funding Methodology Report
  - Beginning development soon



# Assessment Calculations

- Initial Assessment Rolls assembled
- Apportionment Methodology – Costs still being refined as program develops
  - Dashboard tool developed to assess how different cost allocations effect cost splits
    - Allowed us to identify the fixed and variable parameters.

## Variables

Estimated Costs Years 1-5	Nav Maintenance				Local Canal Direct Benefit	Access Channel General Benefit	Arterial Channel Cost-Share	
	Total Program	Initial Construction	Mitigation	Inflation Adjustments				
	\$ 3,673,237	\$ 3,000,000	\$ 3,000,000	\$ 1,644,307	\$ 1,644,777	\$ 449,635	\$ 1,584,765	
		\$ 3,000,000	4.50%	5.00%	404,314	843,253	390,741	
<b>Subtotal Construction and Mitigation</b>	<b>\$ 8,323,544</b>	<b>\$ 2,049,691</b>	<b>\$ 4,298,947</b>	<b>\$ 1,974,906</b>				
Operating Costs (Yrs 1-5)	250,000	5.00%	5.00%					
Maintenance Costs (Yrs 1-5)								
Administrative Costs	611,514				426,430	185,024		
<b>Total Expenses (Years 1-5)</b>	<b>\$ 9,185,053</b>	<b>\$ 2,726,162</b>	<b>\$ 4,483,971</b>	<b>\$ 1,974,906</b>				
% of Initial Construction		45%	12%	43%	TRUE			
% of Mitigation		0%	100%	0%	TRUE			
% of S-Yr Operating Costs		100%	0%	0%	TRUE			
% of S-Yr Maintenance Costs		45%	12%	43%	TRUE			
<b>Total Percent Expense</b>		30%	49%	22%	TRUE			

Cost Share Splits	Non-Ad Valorem Split by Canal Group Equivalent Benefit Units				Ad Valorem All Parcels - Split by County Millage on Value			
	Direct Benefit	General Benefit	Cost-Share	Total	Direct Benefit	General Benefit	Cost-Share	Total
Cost Share Splits	100%	0%	50%		0%	100%	50%	
Cost Share Value	\$ 2,726,162	\$ -	\$ 987,453	\$ 3,713,635	\$ -	\$ 4,483,971	\$ 987,453	\$ 5,471,424
<b>Group</b>	<b>Benefitted Parcel</b>	<b>EBUs (Rounded)</b>	<b>Total Cost Per Year</b>	<b>Rate per EBU</b>				
1	832	617.46	\$ 241,815	\$ 392.00				
2	390	193.25	\$ 122,609	\$ 635.00				
3	887	232.44	\$ 82,767	\$ 357.00				
4	627	531.26	\$ 208,245	\$ 392.00				
5	601	575.87	\$ 80,567	\$ 140.00				
6	123	31.28	\$ 6,724	\$ 215.00				
Total (Annual)	3,660	2,181.58	\$ 742,727					
Total Cost (Years 1-5)			\$ 3,713,635					
Taxable Value				\$ 8,714,435,622	\$ 8,714,435,622	\$ 8,714,435,622	\$ 8,714,435,622	
Required Annual Millage				-	0.1029	0.0227	0.1256	
<b>Annual Cost per \$100k</b>				\$ -	\$ 10.29	\$ 2.27	\$ 12.56	

## Results

Example Scenario				
Assessment	Direct Access	Non-Direct Access	Total	Percent
Ad Valorem	\$ 345,339	\$ 750,637	\$ 1,095,976	59.53%
Non-Ad Valorem	\$ 743,348	\$ -	\$ 743,348	40.41%
<b>Total</b>	<b>\$ 1,088,687</b>	<b>\$ 750,637</b>	<b>\$ 1,839,324</b>	<b>100.00%</b>
<b>Percent</b>	<b>59%</b>	<b>41%</b>	<b>100%</b>	

Example Scenario		
Property Type	Direct Access	Non-Direct Access
Single Family	Single Family	Single Family
Taxable Value	\$ 2,000,000	\$ 2,000,000
Group	6	
Program Duration	5	5
EBU	1.00	-
Rate per EBU	\$ 215.00	-
Annual Total Non-Ad-Valorem	\$ 215.00	\$ -
Annual Millage	0.1256	0.1256
Annual Ad-Valorem	\$ 251.20	\$ 251.20
<b>Annual Parcel Assessment</b>	<b>\$ 466.20</b>	<b>\$ 251.20</b>
<b>Total Assessment (Years 1-5)</b>	<b>\$ 2,331.00</b>	<b>\$ 1,256.00</b>



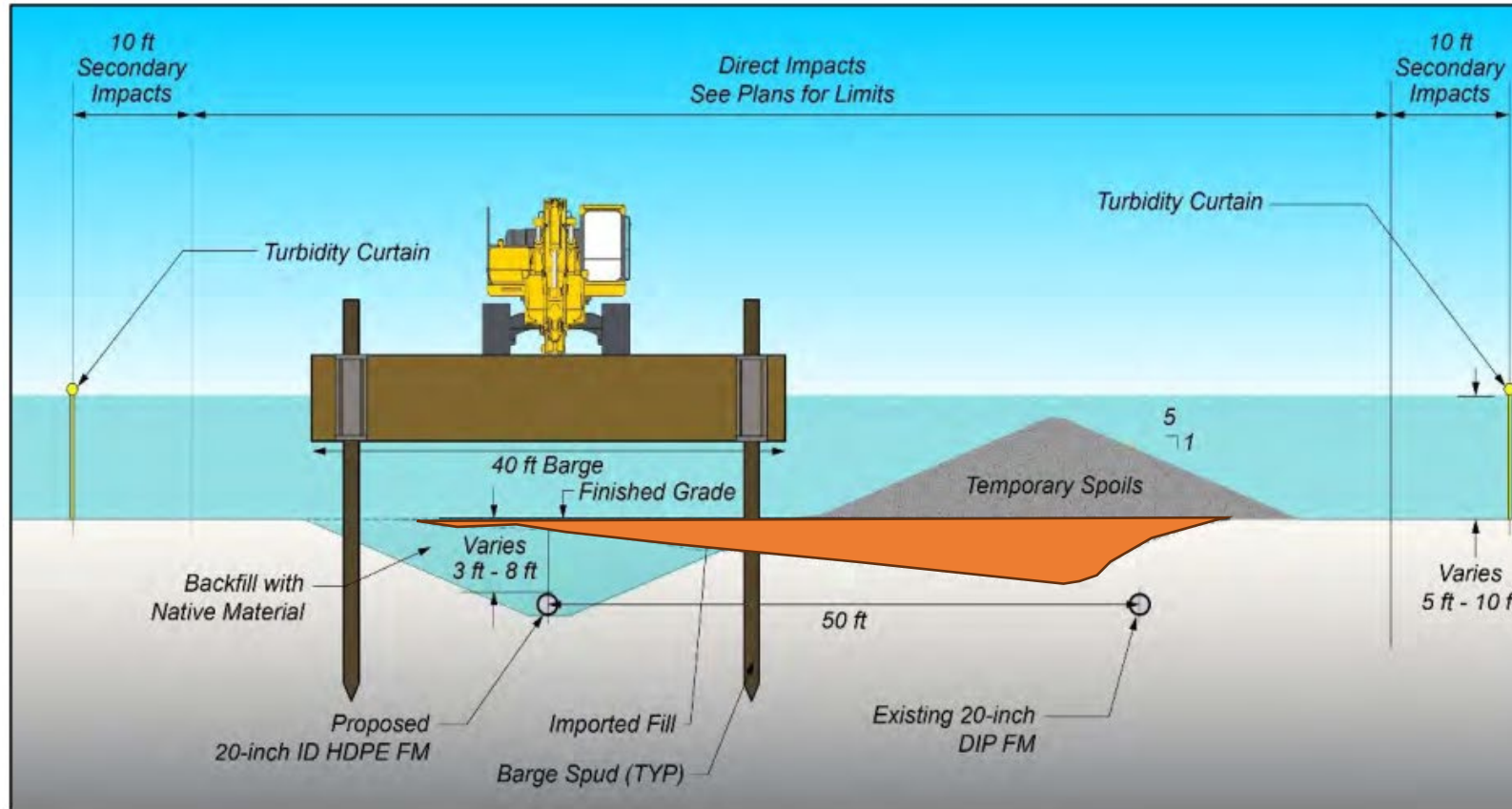
# Variable Parameters for Assessment Apportionment

- The variable parameters ultimately shift the percent cost from each funding source (*Ad Valorem* and *Non-Ad Valorem*).
- Variable Parameters include:

Parameter	<i>Currently born by Ad Valorem</i>	<i>Currently born by Non-Ad Valorem</i>
General Benefit Canal	100%	--
Direct Benefit Canals	--	100%
Shared Benefit Canals	50%	50%
Seagrass Mitigation	100%	--
5-year Operating Costs		100%
5-year Maintenance Costs	Distributed equally based on Initial Construction Cost	



## Subaqueous Force Main



 Imported fill (BUDM)

**Figure 1-7**  
Construction Limits and Methods in Segment 3

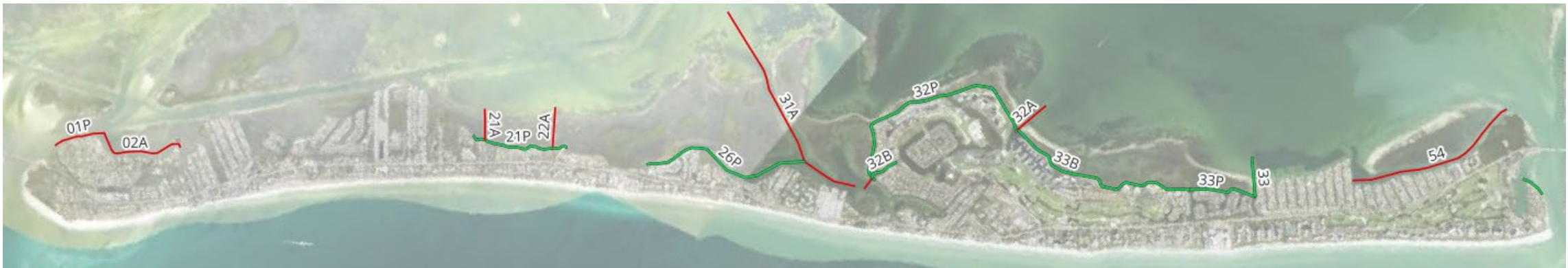


# BUDM Volume Updates

- Update Surveys (Carollo and ESA)
- Test Dredge Material (First Line)
- Update Usable Quantities Available (First Line)
- Update Permits (Carollo, ESA, First Line)
- Align Effort for Future Construction Needs (All)

Max available dredge volume	62,000 CY
Target Volume Presented in 6/2024	40,000 CY
Fill Volume Required by Force Main Project	Approx. 10,000 CY
Total Volume Available for BUDM	Under Development

## Prioritizing General Benefit and Shared Benefit Canals for Ad Valorem Cost Reduction



# Dredge Material Sampling and Testing

TOWN OF LONGBOAT KEY



- Material sampling efforts throughout the island have been completed.
- Sample analysis is in progress.
- Lab testing of select samples are underway.



TOWN OF LONGBOAT KEY

# Public Outreach Development





# Public Outreach Material Development

## Waterways Protection Program: Longboat Key Navigation Maintenance Program

- **Informative Utility Inserts**: Using bill inserts to direct residents to the Longboat Key website for updates and details on community events, explaining the Navigation Program's role in the Waterways Protection Program.
- **Community Engagement Focus**: Building stronger relationships through targeted outreach with Bay Isles, The Condo Federation, and the North-end Coalition.
- **District Specific Engagement Focus**: Educate each of the 6 Districts of the benefits and costs of district specific program elements.
- **Community Participation Event**: Organizing a site-neutral event for all Longboat Key community members to engage, learn, and provide feedback.
- **Inclusive Outreach**: Collaborating with local clubs and organizations for widespread understanding and support.
- **Emphasizing Community Benefits**: Showcasing safety, property value, and lifestyle improvements during public outreach, as part of a comprehensive community initiative.



# Future Tasks and Assignments

- Continued refinement of program costs
- Conduct public outreach
  - Receive and incorporate feedback
- Continue to refine allocation



TOWN OF LONGBOAT KEY

# Thank You