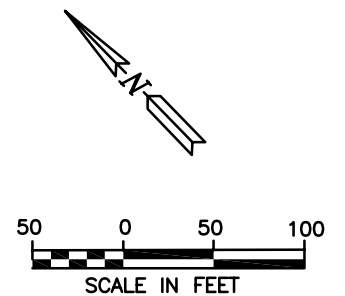
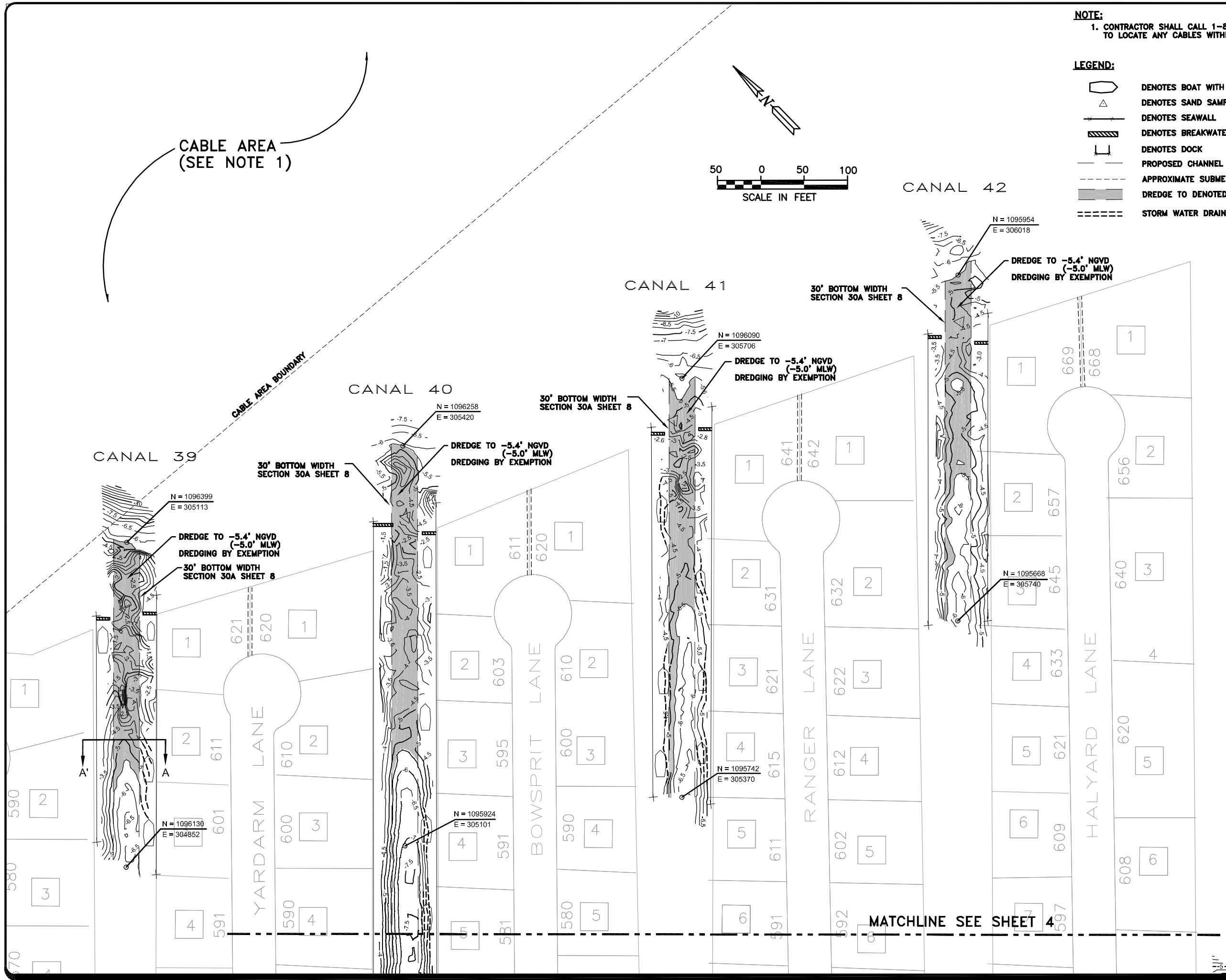


NOTE:
 1. CONTRACTOR SHALL CALL 1-800-432-4770
 TO LOCATE ANY CABLES WITHIN DREDGE AREA.

- LEGEND:**
- DENOTES BOAT WITH DOCK
 - DENOTES SAND SAMPLE LOCATIONS
 - DENOTES SEAWALL
 - DENOTES BREAKWATER
 - DENOTES DOCK
 - PROPOSED CHANNEL
 - APPROXIMATE SUBMERGED CABLE AREA BOUNDARY
 - DREDGE TO DENOTED DEPTH
 - STORM WATER DRAINAGE SYSTEM



CABLE AREA
 (SEE NOTE 1)



G:\SARASOTA\LONGBOAT\848853\CONSTRUCTION\COUNTRY CLUB SHORES CANAL 34-53\848853 COUNTRY CLUB PLAN VIEW.DWG