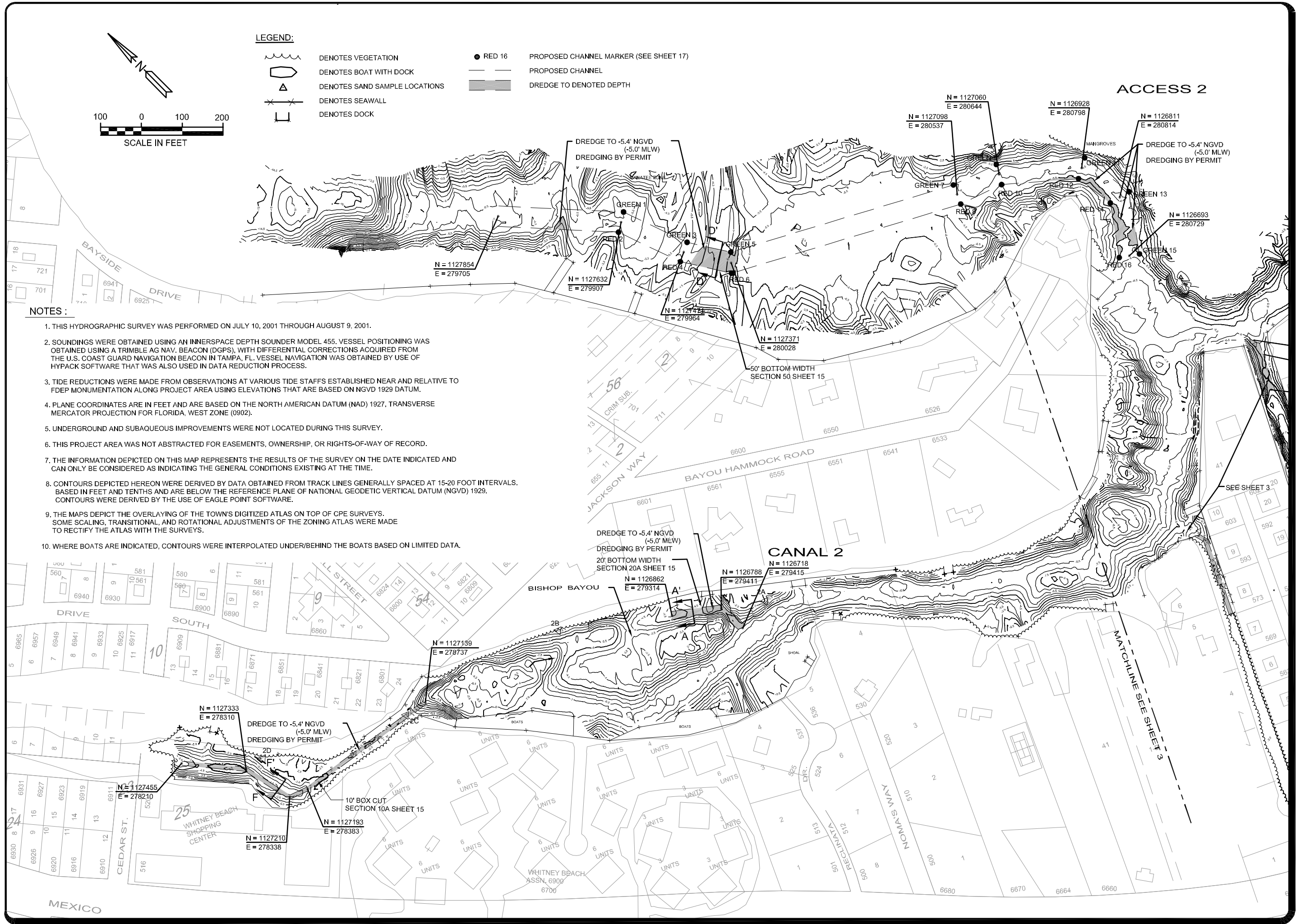


- LEGEND:**
- DENOTES VEGETATION
 - DENOTES BOAT WITH DOCK
 - DENOTES SAND SAMPLE LOCATIONS
 - DENOTES SEAWALL
 - DENOTES DOCK
 - RED 16
 - PROPOSED CHANNEL MARKER (SEE SHEET 17)
 - DREDGE TO DENOTED DEPTH
 - PROPOSED CHANNEL
 - DREDGE TO DENOTED DEPTH

- NOTES:**
1. THIS HYDROGRAPHIC SURVEY WAS PERFORMED ON JULY 10, 2001 THROUGH AUGUST 9, 2001.
 2. SOUNDINGS WERE OBTAINED USING AN INNSPACE DEPTH SOUNDER MODEL 455. VESSEL POSITIONING WAS OBTAINED USING A TRIMBLE AG NAV. BEACON (DGPS), WITH DIFFERENTIAL CORRECTIONS ACQUIRED FROM THE U.S. COAST GUARD NAVIGATION BEACON IN TAMPA, FL. VESSEL NAVIGATION WAS OBTAINED BY USE OF HYPACK SOFTWARE THAT WAS ALSO USED IN DATA REDUCTION PROCESS.
 3. TIDE REDUCTIONS WERE MADE FROM OBSERVATIONS AT VARIOUS TIDE STAFFS ESTABLISHED NEAR AND RELATIVE TO FDEP MONUMENTATION ALONG PROJECT AREA USING ELEVATIONS THAT ARE BASED ON NGVD 1929 DATUM.
 4. PLANE COORDINATES ARE IN FEET AND ARE BASED ON THE NORTH AMERICAN DATUM (NAD) 1927, TRANSVERSE MERCATOR PROJECTION FOR FLORIDA, WEST ZONE (0902).
 5. UNDERGROUND AND SUBAQUEOUS IMPROVEMENTS WERE NOT LOCATED DURING THIS SURVEY.
 6. THIS PROJECT AREA WAS NOT ABSTRACTED FOR EASEMENTS, OWNERSHIP, OR RIGHTS-OF-WAY OF RECORD.
 7. THE INFORMATION DEPICTED ON THIS MAP REPRESENTS THE RESULTS OF THE SURVEY ON THE DATE INDICATED AND CAN ONLY BE CONSIDERED AS INDICATING THE GENERAL CONDITIONS EXISTING AT THE TIME.
 8. CONTOURS DEPICTED HEREON WERE DERIVED BY DATA OBTAINED FROM TRACK LINES GENERALLY SPACED AT 15-20 FOOT INTERVALS. BASED IN FEET AND TENTHS AND ARE BELOW THE REFERENCE PLANE OF NATIONAL GEODETIC VERTICAL DATUM (NGVD) 1929. CONTOURS WERE DERIVED BY THE USE OF EAGLE POINT SOFTWARE.
 9. THE MAPS DEPICT THE OVERLAYING OF THE TOWN'S DIGITIZED ATLAS ON TOP OF CPE SURVEYS. SOME SCALING, TRANSITIONAL, AND ROTATIONAL ADJUSTMENTS OF THE ZONING ATLAS WERE MADE TO RECTIFY THE ATLAS WITH THE SURVEYS.
 10. WHERE BOATS ARE INDICATED, CONTOURS WERE INTERPOLATED UNDER/BEHIND THE BOATS BASED ON LIMITED DATA.



COASTAL PLANNING & ENGINEERING, INC.
 PH. (561) 391-8102
 FAX. (561) 391-9116
 2481 NW BOCA RATON BOULEVARD
 BOCA RATON, FLORIDA 33431
 FLA. #G78775

PROJECT:
 TOWN OF LONGBOAT KEY
 NORTH CANAL MAINTENANCE
 DREDGING PROJECT
 PLAN VIEW

DRAWN BY:
 SB
 CHECKED BY:
 DMES
 DATE:
 9/7/01
 COMM. NO.:
 8488.44
 SCALE:
 1" = 100'
 SHEET:
 2 OF 22

REVISION DATE:

GISAR/CANAL/BOAT/STRUCTURE/INSTRUMENT/ONESTOP/CANALS/NORTH/HARRIS/NORTH/EXEMPTION/CANAL/SURVEY/DWG