

Prepared By: Mark Liebel
Duncan Seawall Dock & Boat Lift, LLC
1714 Independence Blvd.
Sarasota, FL 34234

941-351-1553
Duncan Seawall Dock & Boat Lift, LLC
1714 Independence Blvd.
Sarasota, FL 34234



Scale: 1" = 10'
Date: 9/19/23

Prepared For: Scott McDonough
5910 Gulf of Mexico Drive
Sarasota, FL 34228

Scope of Work:

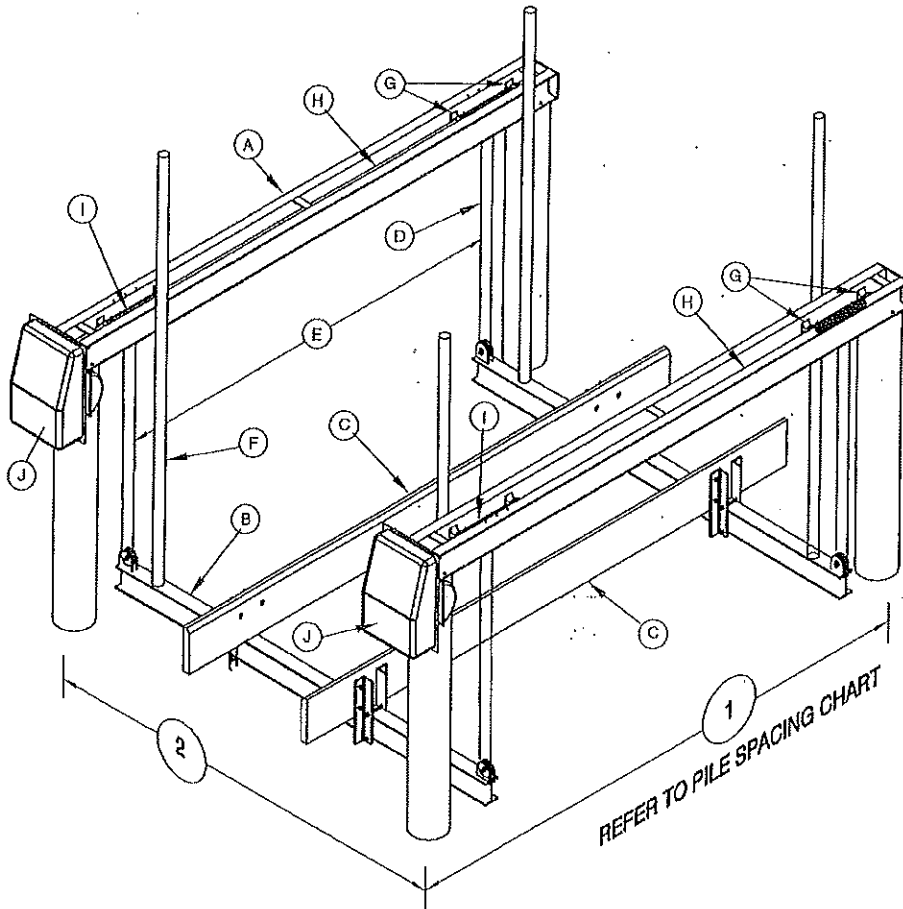
Relocate existing personal water craft lift approximately 8' further into canal.
Install dual personal water craft lift.

New lift to be installed so no portion of the lift with the exception of the guide posts will exceed 5' above the dock.

Canal width 109' at narrowest point.
109 x 30% = 32.7'
New lift will extend 15'-9" from Seawall



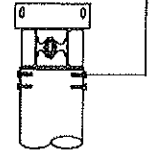
GOLDEN ENGINEERED "RUN ABOUT" 4 POST, 2 MOTOR BOAT LIFTS



PILE SPACING CHART
The boat center of gravity needs to be set in the center of the top beam

Lift Capacity	"1" Dimension	"2" Dimension	Recommended Pile Diameters
4,500 #	8'-4"	10'-0"	(4) 8"φ (min)
6,000 #		12'-0"	
9,000 #	11'-8"	12'-6"	
12,000 #		12'-6"	

STAINLESS STEEL PILING MOUNT BRACKET, 4 -
3/8" STAINLESS STEEL LAG SCREWS USED TO CONNECT THE BRACKETS TO THE PILING AND 2 -
3/8" CARRIAGE BOLTS USED TO CONNECT THE BRACKETS TO THE LIFT CHANNELS



NOTE: THIS STRUCTURE WILL WITHSTAND WIND LOADS ASSOCIATED WITH AN ULTIMATE WIND SPEED OF 180 MPH, EXPOSURE "D" CALCULATED PER F.B.C. 2020 & ASCE/SEI 7-16. BOATS SHALL NOT BE STORED ON LIFT DURING HIGH WIND EVENTS
IN GENERAL, PILING PENETRATION TO BE 10' INTO THE SAND BOTTOM OR 5' INTO THE ROCK STRATA. SUB-SURFACE CONDITIONS CAN VARY GREATLY, THE CONTRACTOR SHALL VERIFY ALL PILE CAPACITIES. ALL PILINGS TO BE 2.5 C.C.A. TREATED

	(A)	(B)	(C)	(D)	(E)	(F)	(G)	(H)	(I)	(J)		
LIFT CAPACITY	TOP BEAM CHANNEL 2 EACH	CRADLE I-BEAM 2 EACH	BUNK BOARDS (PT)	STAINLESS STEEL CABLE	CABLE SPREAD	GUIDE POST HGTH	BRGS	DRIVE SHAFT	WINDER	MOTOR HP VOLTAGE	INCHES OF LIFT PER MIN	RECOM PILING SIZES
4,500 #	4" H x 0.15 2" W x 0.23 108" O.A.L.	6" H x 0.19 4" W x 0.29 120" O.A.L.	2x6 x 12'-0" CARPETED ON CAP	(4) 3/8"φ x 15'-0" 1 PART	78"	80"	(8) 1.5" EXTENDED 6061-T ALUM.	1-1/2" SCHEDULE 80 GALVANIZED STEEL PIPE	2" SCHEDULE 80 6061-T6 ALUM. PIPE	3/4 HP 1725 RPM	27"	(4) 8"φ (min)
6,000 #		6" H x 0.19 4" W x 0.29 144" O.A.L.		(4) 3/8"φ x 15'-0" 1 PART								
9,000 #	5" H x 0.15 2.25" W x 0.26 150" O.A.L.	6" H x 0.21 4" W x 0.35 144" O.A.L.		(4) 5/16"φ x 30'-0" 2 PART	120"						13.5"	
12,000 #	6" H x 0.17 2.5" W x 0.29 150" O.A.L.	8" H x 0.23 5" W x 0.35 150" O.A.L.										

Piling(s)

9"

2.5 C.C.A. Piling

10 1/2
Max

Duncan Seawall
Dock & Boat Lift LLC
1714 Independence Blvd.
Sarasota, FL 34234

MHWL

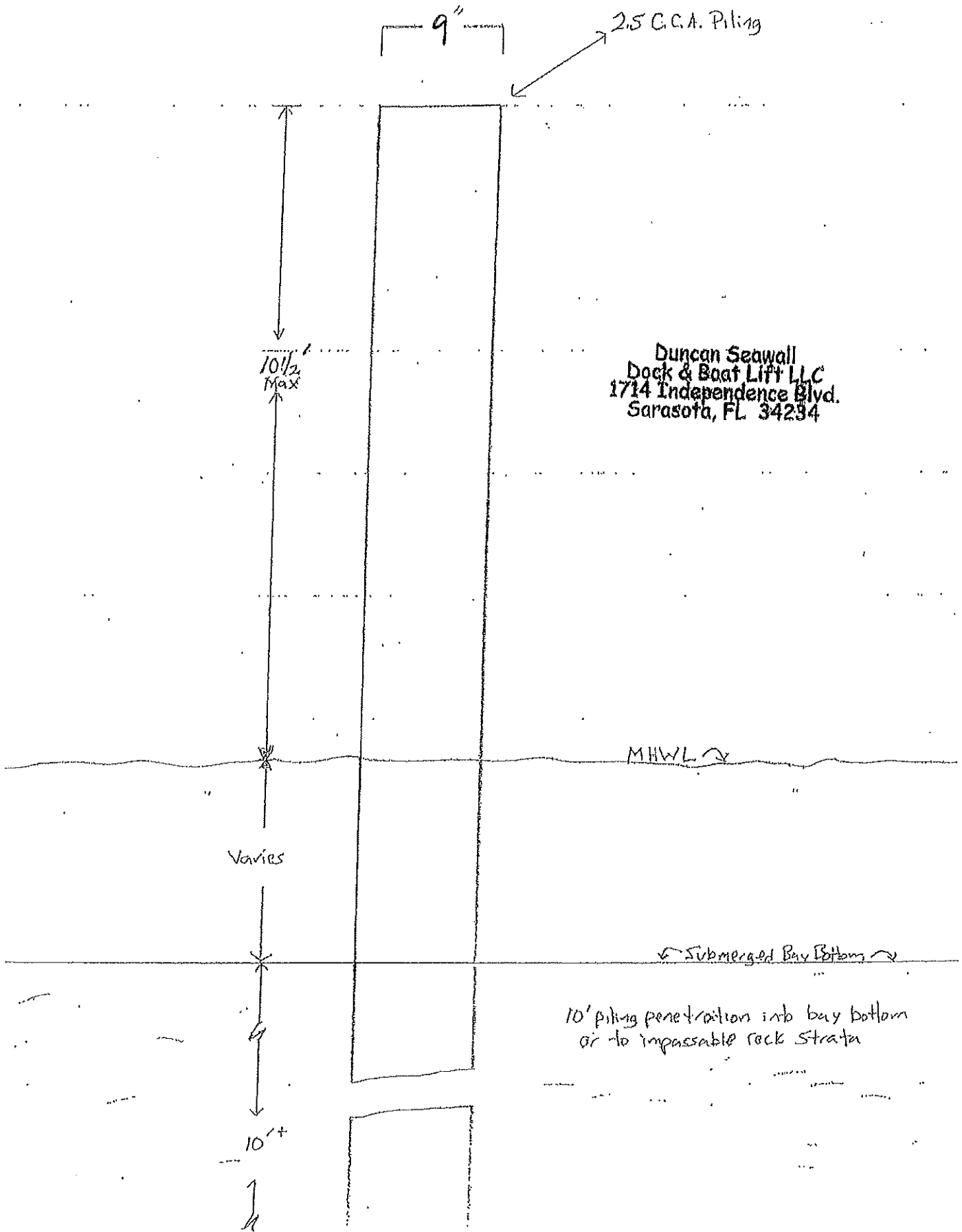
Varies

Submerged Bay Bottom

10' piling penetration into bay bottom
or to impassable rock strata

10'+

1
1



Piling (S)

10"

2.5 C.C.A. Piling

10 1/2'
Max

Duncan Seawall
Dock & Boat Lift LLC
1714 Independence Blvd.
Sarasota, FL 34234

MHWL

Varies

Submerged Bay Bottom

10' piling penetration into bay bottom
or to impassable rock strata

10'+

