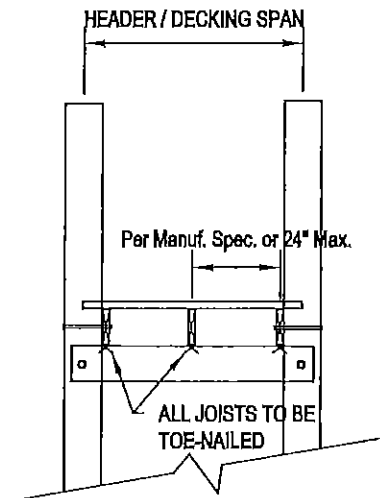


GENERAL NOTES:

1. IN LIEU OF SPECIFIC CODE REQUIREMENTS, RESIDENTIAL DOCK HAS BEEN DESIGNED FOR THE FOLLOWING MINIMAL CONDITIONS:
 LIVE LOAD: 40 PSF
 DEAD LOAD: 10 PSF
 HURRICANE UPLIFT: 30 PSF
 DEFLECTION LIMITS: L/360 (LIVE LOAD)
2. ALL DIMENSIONAL LUMBER SHALL BE MINIMUM NO. 2 SOUTHERN YELLOW PINE.
3. DESIGN MEETS MINIMUM REQUIREMENTS OF 2017 AND 2020 FLORIDA BUILDING CODES. WIND SPEED 170 MPH EXP. D.

LONGITUDINAL DOCK CROSS SECTION

HEADER SPAN (Feet)	JOIST SPAN (Feet)	HEADER SIZE (Nominal Inches)	JOIST SIZE (Nominal Inches)	BOLT SIZE (Qty, Inches)
<6	10	2X8	2x8	1-5/8
8	10	2x8	2x8	2-5/8
10	10	2x10	2x8	2-5/8
12	10	2x12	2x10	2-5/8
<6	12	2X8	2x8	1-5/8
7	12	2x8	2x8	2-5/8
9	12	2x10	2x8	2-5/8
11	12	2x12	2x10	2-3/4



TRANSVERSE DOCK CROSS SECTION

TYPICAL CROSS SECTIONS FOR RESIDENTIAL DOCKS	
DUNCAN SEAWALL	
1714 INDEPENDENCE BLVD, SRQ 34234	

Lift Piling

Piling (S)

9"

2.5 C.C.A. Piling

10 1/2'
Max

Duncan Seawall
Dock & Boat Lift LLC
1714 Independence Blvd.
Sarasota, FL 34234

MHWL

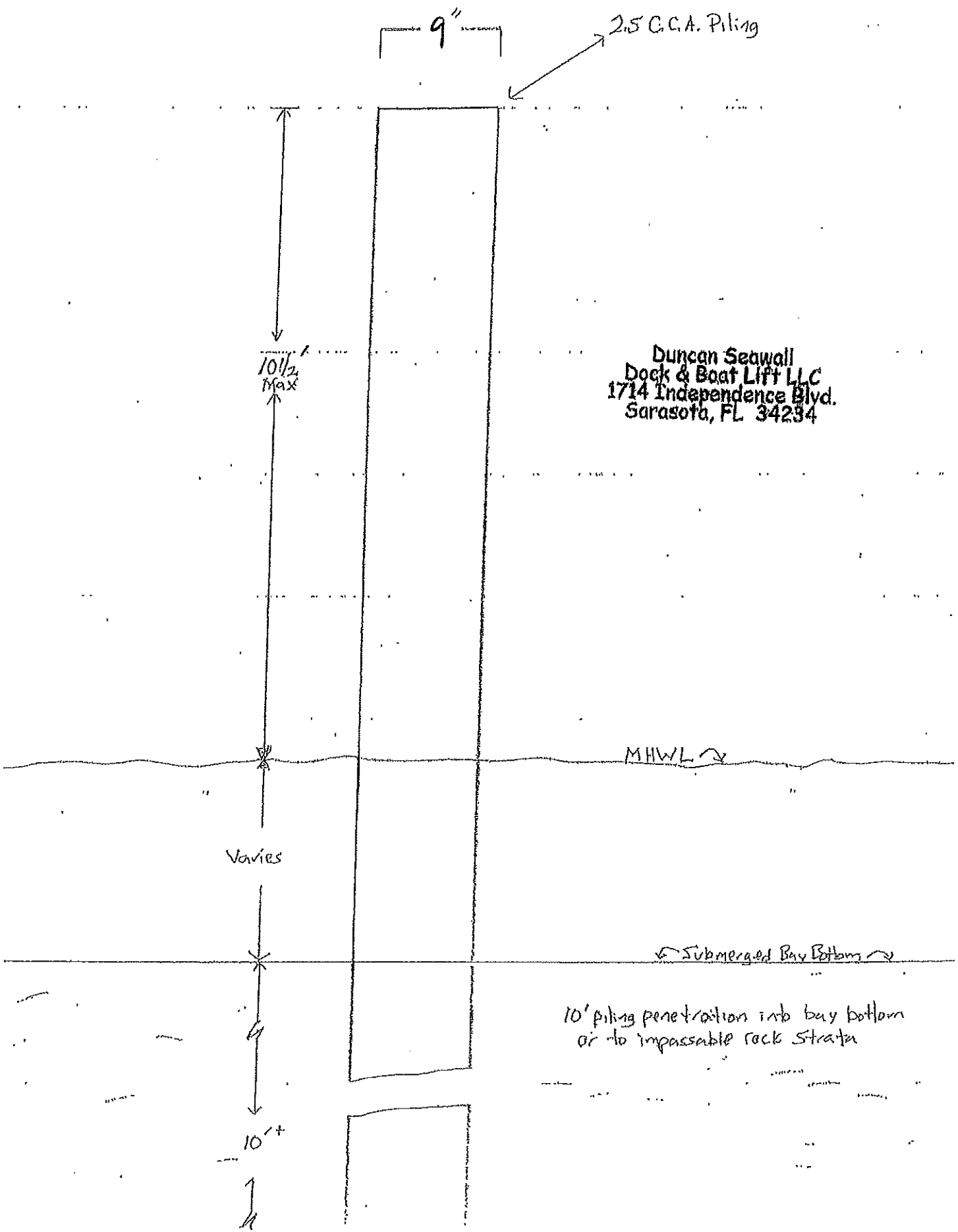
Varies

Submerged Bay Bottom

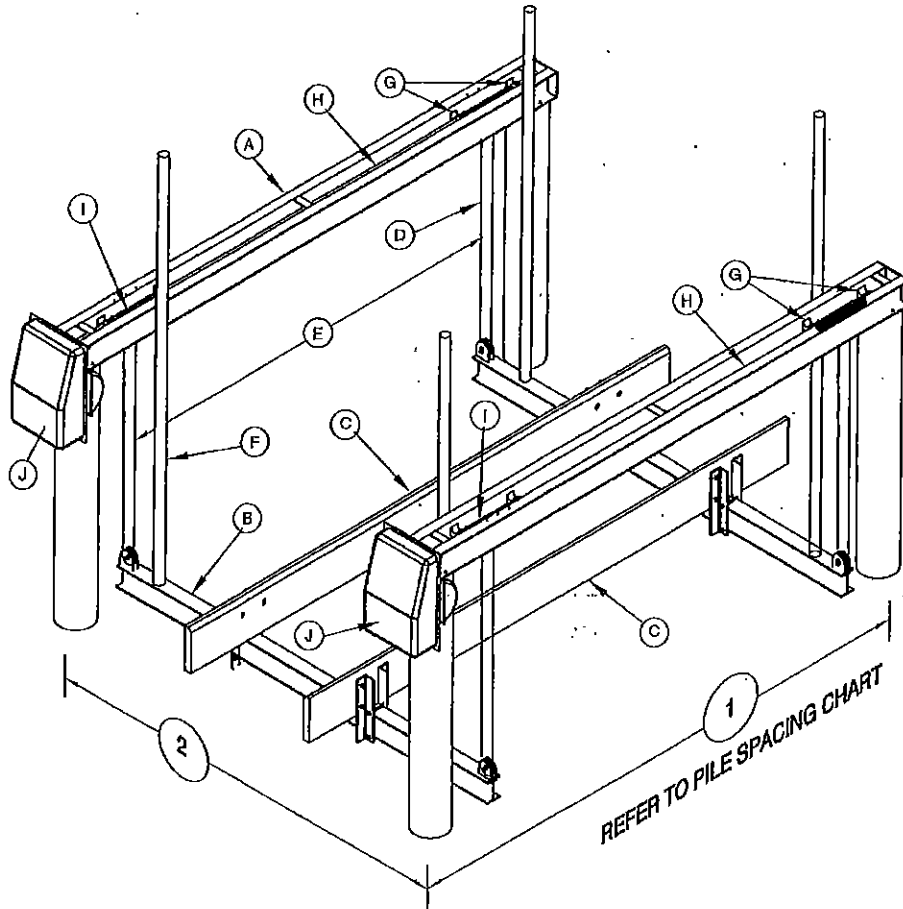
10' piling penetration into bay bottom
or to impassable rock strata

10'+

11



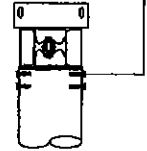
GOLDEN ENGINEERED "RUN ABOUT" 4 POST, 2 MOTOR BOAT LIFTS



PILE SPACING CHART
The boat center of gravity needs to be set in the center of the top beam

Lift Capacity	1" Dimension	2" Dimension	Recommended Pile Diameters
4,500 #	8'-4"	10'-0"	(4) 8"φ (min)
6,000 #		12'-0"	
9,000 #		12'-6"	
12,000 #	11'-9"	12'-6"	

STAINLESS STEEL PILING MOUNT BRACKET, 4 -
3/8" STAINLESS STEEL LAG SCREWS USED TO CONNECT THE BRACKETS TO THE PILING AND 2 - 3/8" CARRIAGE BOLTS USED TO CONNECT THE BRACKETS TO THE LIFT CHANNELS



NOTE: THIS STRUCTURE WILL WITHSTAND WIND LOADS ASSOCIATED WITH AN ULTIMATE WIND SPEED OF 180 MPH, EXPOSURE "D" CALCULATED PER F.B.C. 2020 & ASCE/SEI 7-16. BOATS SHALL NOT BE STORED ON LIFT DURING HIGH WIND EVENTS

IN GENERAL, PILING PENETRATION TO BE 10' INTO THE SAND BOTTOM OR 5' INTO THE ROCK STRATA. SUB-SURFACE CONDITIONS CAN VARY GREATLY, THE CONTRACTOR SHALL VERIFY ALL PILE CAPACITIES. ALL PILINGS TO BE 2.5 C.C.A. TREATED

	A	B	C	D	E	F	G	H	I	J			
LIFT CAPACITY	TOP BEAM CHANNEL 2 EACH	CRADLE I-BEAM 2 EACH	BUNK BOARDS (PT)	STAINLESS STEEL CABLE	CABLE SPREAD	GUIDE POST HGTH	BRGS	DRIVE SHAFT	WINDER	MOTOR HP VOLTAGE	INCHES OF LIFT PER MIN	RECOM PILING SIZES	
4,500 #	4" H x 0.15 2" W x 0.23 108" O.A.L.	6" H x 0.19 4" W x 0.29 120" O.A.L.	2x8 x 12'-0" CARPETED ON CAP	(4) 1/4"φ x 15'-0" 1 PART	78"	80"	(8) 1.5" EXTENDED 6061-T ALUM.	1-1/2" SCHEDULE 80 GALVANIZED STEEL PIPE	2" SCHEDULE 80 6061-T5 ALUM. PIPE	3/4 HP 1725 RPM	27"	(4) 8"φ (min)	
6,000 #		6" H x 0.19 4" W x 0.29 144" O.A.L.		(4) 5/8"φ x 15'-0" 1 PART									
9,000 #	5" H x 0.15 2.25" W x 0.26 150" O.A.L.	6" H x 0.21 4" W x 0.35 144" O.A.L.		(4) 5/8"φ x 30'-0" 2 PART	120"								13.5"
12,000 #	6" H x 0.17 2.5" W x 0.29 150" O.A.L.	8" H x 0.23 5" W x 0.35 150" O.A.L.											

Prepared By: Mark Liebel
 941-351-1553
 Duncan Seawall Dock & Boat Lift, LLC
 1714 Independence Blvd.
 Sarasota, FL 34234



Scale:
 1" = 10'

Date:
 5/23/23

Prepared For: Tyler Herschberger
 7471 La Lenaire Drive
 Longboat Key, FL 34228

