



# **LONGBEACH VILLAGE ASSOCIATION MEETING TOPICS OF CONCERN TO RESIDENTS**

**TOWN COMMISSION MEETING  
DECEMBER 3, 2012**



## **LONGBEACH VILLAGE ASSOCIATION MEETING PRESENTATION OBJECTIVES**

- **Present Proposed Broadway Parking Hours  
Time Extension and Obtain Feedback**
- **Receive Input on Additional Resident Concerns  
Per Commission Meeting November 5, 2012**



## **COMMUNITY CONCERNS**



- **Parking**
- **Noise**
- **Future Restaurant Expansion**



## **PARKING CONCERNS**

- **Extended Hours on Broadway**
  - Expressed Support for Restaurant Viability
  - Expressed Need for Consistency with Town Dock Access Hours
  - Questioned the Need and Effect of Late Night Noise
- **Side Streets**
  - Questioned Extended On Street Parking and Jewfish Key Rental Parking
  - Questioned Parking on Both Sides of Street and Emergency Vehicle Access Issues



## **NOISE CONCERNS**

- **Effect of Extended Parking Hours on Broadway**
- **Jewfish Key Rental Noise**



## **FUTURE RESTAURANT EXPANSION CONCERNS**

- **Questioned Existing Onsite Parking at the Restaurants and its Adequacy**
- **Questioned Hours of Operation and Code Compliance**



## **OTHER MENTIONED CONCERNS**

- **Criminal Activity**
- **Village Drainage Maintenance**
- **White Fly Concerns**

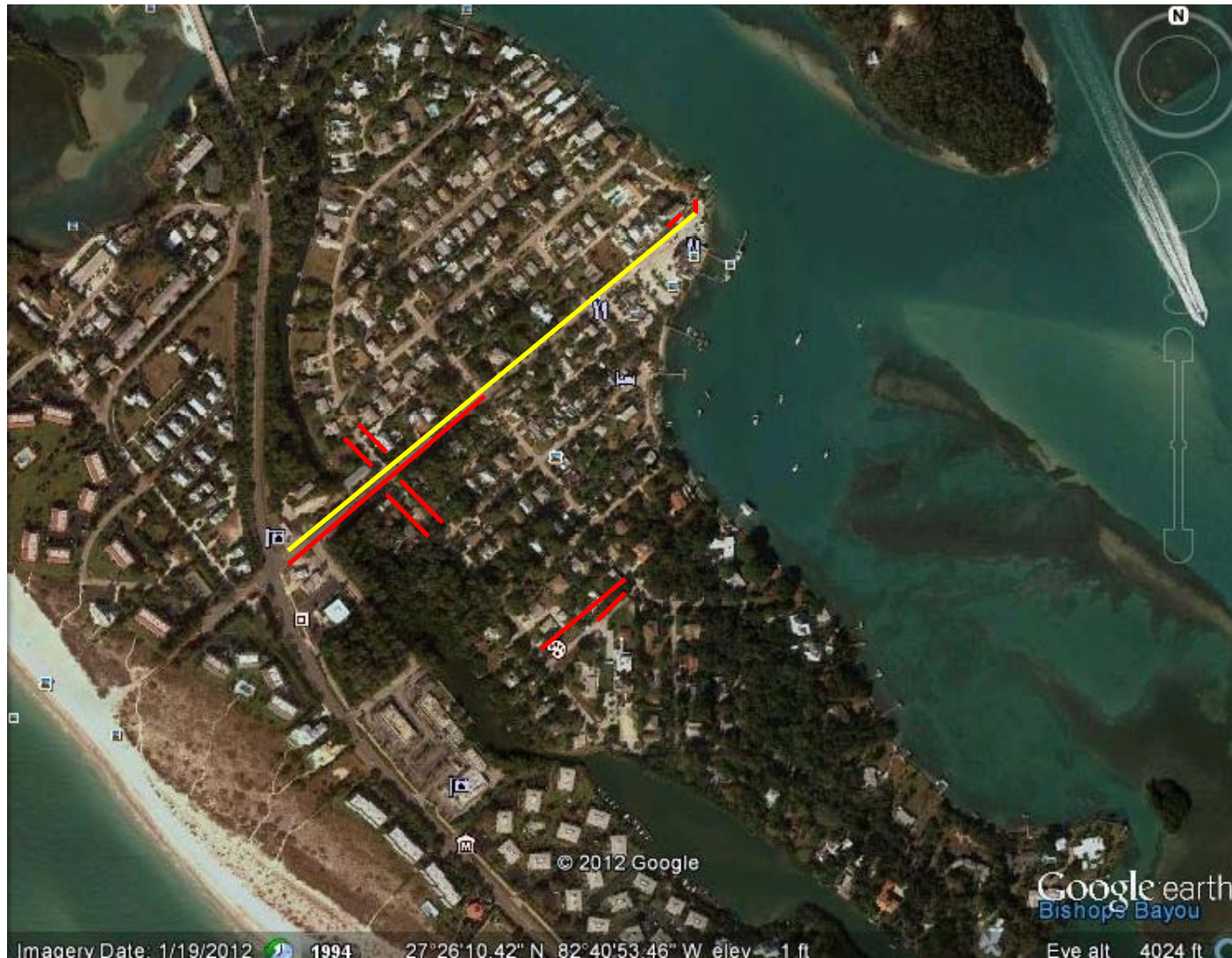


## **STAFF REVIEW**

- **Perform Parking Assessment on Village Streets**
- **Review Current Onsite Parking for Restaurants**
- **Perform Code and Police Investigation of  
Jewfish Key Rentals**
- **Review Noise Complaints**
- **Review Police Incidents Specific to the Village**



## CURRENT PARKING STATUS



Prohibited —  
Restricted —

Restricted Parking:  
October to April 8pm to 5am  
April to October 9pm to 5am



## PARKING ON BOTH SIDES OF STREET

- Creates possible life/safety issues with emergency vehicles
- Could limit parking to one side of the street for those right-of-ways that are too narrow for parking on both sides
- Would reduce parking capacity of the neighborhood during events
- Action: Staff will review parking patterns and report back





## **ON STREET PARKING**

- **Limit on street parking throughout the community**
  1. **Could be further limited by specific street or Town wide Code change**
  2. **Warning and then not moved, ticketed or towed**
  3. **Requires additional enforcement**
  4. **Would address Jewfish Key parking issues**



## **RESTAURANT PARKING**

- **Continued growth of Moore's and Mar Vista**
  1. **Expansions have been approved through site plan process with public review and input**
  2. **All expansions have been consistent with Town Codes**
  3. **Future expansions will be subject to Town regulations and public review**



## **JEWFISH KEY RENTAL ISSUES**

- **Noise from rentals on Jewfish Key**
  1. **Code and Police will be meeting w/Town Manager and Attorney to discuss legal options/solutions**
  2. **Staff will address this issue through application of Town's Code**



## **PARKING INCIDENTS**

- **Linley St. averages 1 complaint per year since 2009**
- **Lois Ave. generated 2 complaints since 2009**
- **Moore's Stone Crab was the site of 5 complaints since 2009**
- **Mar Vista (Village Pub) received 2 complaints since 2009**
- **The City Dock (Boat Access 8) totaled 18 complaints since 2009**
- **Broadway/Bayside boat dock received 5 complaints in 2011**
- **Broadway (560-801 block) was the site of 2 complaints this year 2012**



## **NOISE INCIDENTS**

- **10 Noise Complaints in 2012**
  - 2 Related to Jewfish Key Noise
  - 8 Related to Village Area Noise
- **14 Noise Complaints Received in 2011**
  - 4 Related to Jewfish Key Noise
  - 10 Related to Village Area Noise
- **11 Noise Complaints Received in 2010**
  - 0 Related to Jewfish Key Noise
  - 11 Related to Village Area Noise



## **POLICE INCIDENTS**

- **7 Residential and 1 Vehicular Incidents of Burglary in 2010**
- **3 Residential and 4 Vehicular Incidents of Burglary in 2011**
- **6 residential burglaries 14 vehicular incidents in 2012**

**All the residential and 8 vehicular, TS Debby**



## **STORM DRAINS**

- **Drain Maintenance Performed after Substantial Rain Events**
  - 7 times in 2010
  - 16 times in 2011
  - 14 times in 2012
- **2010 Extensive Cleaning at Town Dock Drain**
- **2011 Linley Street Boat Ramp Valve Replacement and Extensive Cleaning**
- **2012 Linley Street Boat Ramp Valve Repair**



## **WHITE FLY**

- **County Extension Service: Not Lethal to Landscape**
- **Identified in all Coastal Areas**
- **Various Treatment Methods**
  - **Surface Application (Not Very Effective)**
  - **Systemic Application (Recommended by Extension Agent)**
  - **Contact Extension Agent for Specific Application Options**
- **Additional Information Available from Town Website**



## **NEXT STEPS**

**Pending Town Commission Direction, Schedule  
Workshop to Present Results of Staff Review to  
Town Commission and Residents**



**QUESTIONS?**