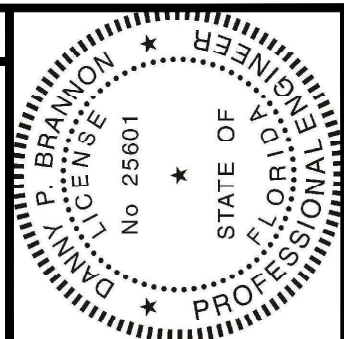
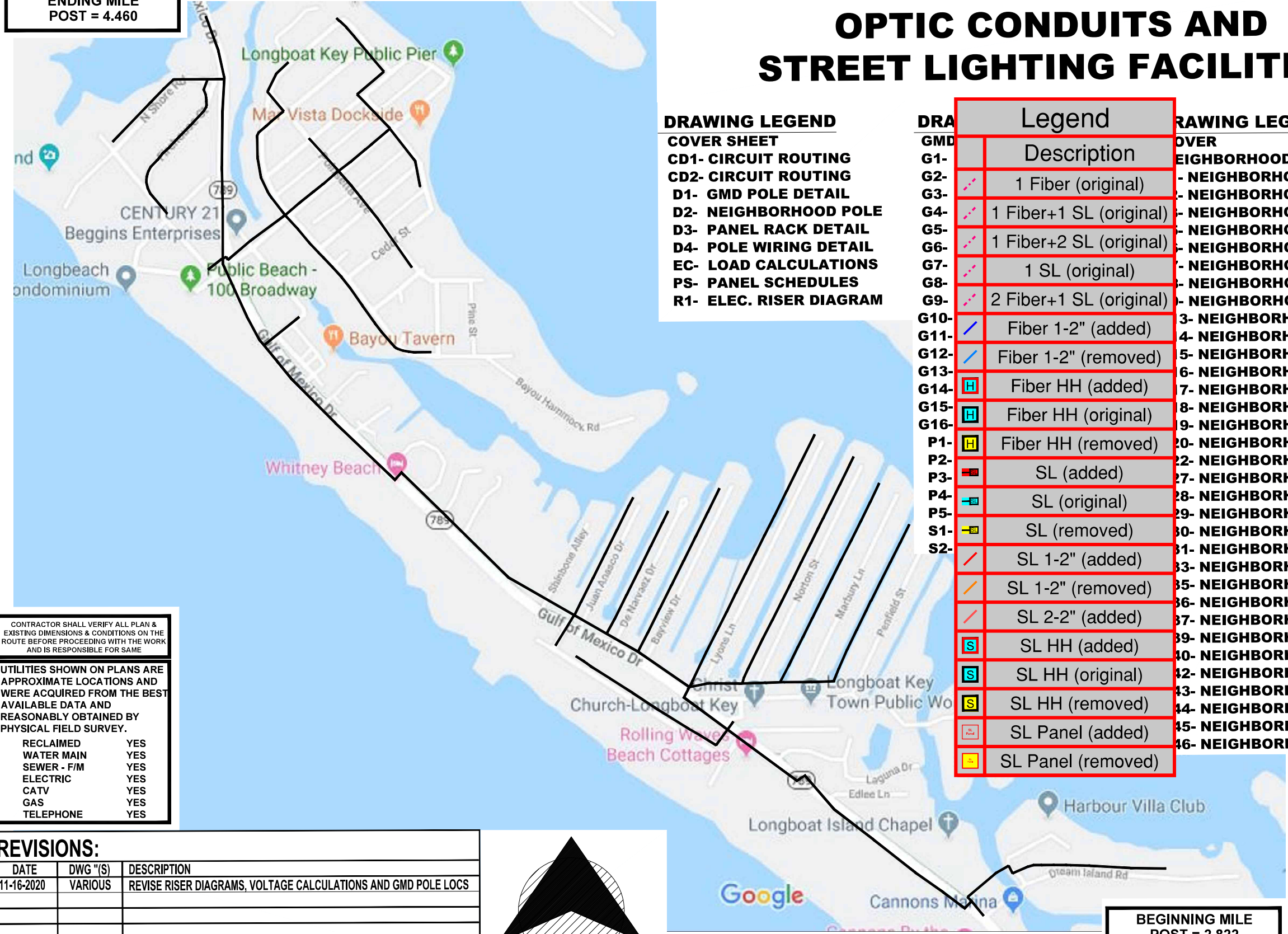


INSTALLATION OF TOWN OWNED FIBER OPTIC CONDUITS AND STREET LIGHTING FACILITIES



ENDING MILE POST = 4.460



DRAWING LEGEND

COVER SHEET

- CD1- CIRCUIT ROUTING
- CD2- CIRCUIT ROUTING
- D1- GMD POLE DETAIL
- D2- NEIGHBORHOOD POLE
- D3- PANEL RACK DETAIL
- D4- POLE WIRING DETAIL
- EC- LOAD CALCULATIONS
- PS- PANEL SCHEDULES
- R1- ELEC. RISER DIAGRAM

Legend	
Description	
G1-	1 Fiber (original)
G2-	1 Fiber+1 SL (original)
G3-	1 Fiber+2 SL (original)
G4-	1 SL (original)
G5-	2 Fiber+1 SL (original)
G6-	Fiber 1-2" (added)
G7-	Fiber 1-2" (removed)
G8-	Fiber HH (added)
G9-	Fiber HH (original)
G10-	Fiber HH (removed)
G11-	SL (added)
G12-	SL (original)
G13-	SL (removed)
G14-	SL 1-2" (added)
G15-	SL 1-2" (removed)
G16-	SL 2-2" (added)
P1-	SL HH (added)
P2-	SL HH (original)
P3-	SL HH (removed)
P4-	SL Panel (added)
P5-	SL Panel (removed)

DRAWING LEGEND

COVER

- 1- NEIGHBORHOOD PLAN DRAWING
- 2- NEIGHBORHOOD PLAN DRAWING
- 3- NEIGHBORHOOD PLAN DRAWING
- 4- NEIGHBORHOOD PLAN DRAWING
- 5- NEIGHBORHOOD PLAN DRAWING
- 6- NEIGHBORHOOD PLAN DRAWING
- 7- NEIGHBORHOOD PLAN DRAWING
- 8- NEIGHBORHOOD PLAN DRAWING
- 9- NEIGHBORHOOD PLAN DRAWING
- 10- NEIGHBORHOOD PLAN DRAWING
- 11- NEIGHBORHOOD PLAN DRAWING
- 12- NEIGHBORHOOD PLAN DRAWING
- 13- NEIGHBORHOOD PLAN DRAWING
- 14- NEIGHBORHOOD PLAN DRAWING
- 15- NEIGHBORHOOD PLAN DRAWING
- 16- NEIGHBORHOOD PLAN DRAWING
- 17- NEIGHBORHOOD PLAN DRAWING
- 18- NEIGHBORHOOD PLAN DRAWING
- 19- NEIGHBORHOOD PLAN DRAWING
- 20- NEIGHBORHOOD PLAN DRAWING
- 21- NEIGHBORHOOD PLAN DRAWING
- 22- NEIGHBORHOOD PLAN DRAWING
- 23- NEIGHBORHOOD PLAN DRAWING
- 24- NEIGHBORHOOD PLAN DRAWING
- 25- NEIGHBORHOOD PLAN DRAWING
- 26- NEIGHBORHOOD PLAN DRAWING
- 27- NEIGHBORHOOD PLAN DRAWING
- 28- NEIGHBORHOOD PLAN DRAWING
- 29- NEIGHBORHOOD PLAN DRAWING
- 30- NEIGHBORHOOD PLAN DRAWING
- 31- NEIGHBORHOOD PLAN DRAWING
- 32- NEIGHBORHOOD PLAN DRAWING
- 33- NEIGHBORHOOD PLAN DRAWING
- 34- NEIGHBORHOOD PLAN DRAWING
- 35- NEIGHBORHOOD PLAN DRAWING
- 36- NEIGHBORHOOD PLAN DRAWING
- 37- NEIGHBORHOOD PLAN DRAWING
- 38- NEIGHBORHOOD PLAN DRAWING
- 39- NEIGHBORHOOD PLAN DRAWING
- 40- NEIGHBORHOOD PLAN DRAWING
- 41- NEIGHBORHOOD PLAN DRAWING
- 42- NEIGHBORHOOD PLAN DRAWING
- 43- NEIGHBORHOOD PLAN DRAWING
- 44- NEIGHBORHOOD PLAN DRAWING
- 45- NEIGHBORHOOD PLAN DRAWING
- 46- NEIGHBORHOOD PLAN DRAWING

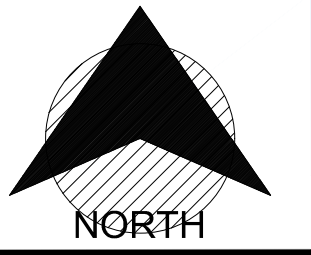
CONTRACTOR SHALL VERIFY ALL PLAN & EXISTING DIMENSIONS & CONDITIONS ON THE ROUTE BEFORE PROCEEDING WITH THE WORK AND IS RESPONSIBLE FOR SAME

UTILITIES SHOWN ON PLANS ARE APPROXIMATE LOCATIONS AND WERE ACQUIRED FROM THE BEST AVAILABLE DATA AND REASONABLY OBTAINED BY PHYSICAL FIELD SURVEY.

RECLAIMED	YES
WATER MAIN	YES
SEWER - F/M	YES
ELECTRIC	YES
CATV	YES
GAS	YES
TELEPHONE	YES

REVISIONS:

DATE	DWG "(S)	DESCRIPTION
11-16-2020	VARIOUS	REVISE RISER DIAGRAMS, VOLTAGE CALCULATIONS AND GMD POLE LOCS



BEGINNING MILE POST = 2.822

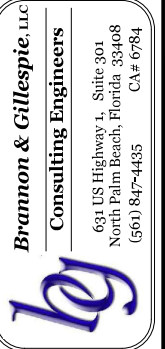
CALL BEFORE YOU DIG

DIAL 811 or 1-800-292-8525
www.call811.com

TWO FULL BUS. DAYS BEFORE YOU DIG

IT IS THE CONTRACTOR'S RESPONSIBILITY TO CONTACT UTILITY COMPANIES PRIOR TO ANY CONSTRUCTION AS THE LOCATION OF UTILITIES SHOWN ON THIS PLAN ARE APPROXIMATE AND POSSIBLY INCOMPLETE. THEREFORE CERTIFICATION TO THE LOCATION OF ALL UNDERGROUND UTILITIES IS WITH HELD.

Town of Longboat Key



DRAWINGS FOR:
FIBER OPTIC AND STREET LIGHTING UTILITY CONSTRUCTION - PHASE 2
LONGBOAT KEY, FLORIDA



Digitally signed by
Danny P Brannon
Date: 2020.11.16 11:03:13-05'00'

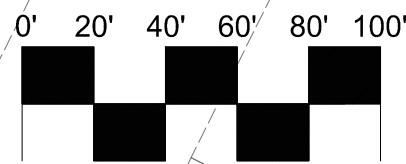
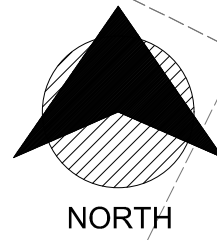
DANNY P. BRANNON, P. E.
FLORIDA P. E. NO. 25601

DATE 11/16/2020

Date: 10/22/2020
Scale: AS NOTED
Drawn: DPB
Checked: DPB
Job #: 2014-LBK
Sheet
COVER SHEET

MATCHLINE-STA 03+23
FOR CONTINUATION SEE SHEET 16

MATCHLINE-STA 03+34
FOR CONTINUATION SEE SHEET 16



SCALE

- STREET LIGHT 10" x 17" HANDHOLE.
- FIBER OPTICS 24" x 36" HANDHOLE.
- PROPOSED STREET LIGHT
- EXISTING STREET POST LIGHT
- EXISTING STREET POST LIGHT WITH STREET SIGN

NOTE:

- A. 2" HDPE BLACK WITH ORANGE STRIPE FIBER OPTICS CONDUITS ONLY TO BE TERMINATED IN FIBER OPTICS HANDHOLES.
- B. 2" HDPE GRAY STREET LIGHT CONDUITS ONLY TO BE TERMINATED IN STREET LIGHT HANDHOLES.

HH's on GMD print

CONNECT STREET LIGHT PANEL TO EXISTING LIFT STATION ELEC. SERVICE. VERIFY CAPACITY.

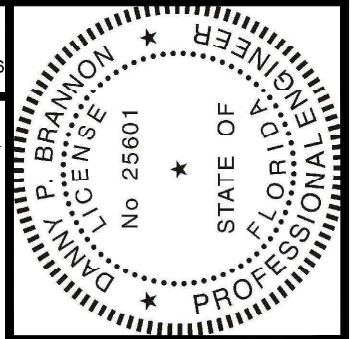
Existing Elec. Svc.

PROPOSED FIBER OPTIC TRANSFORMERS

- 24" RCP Inv. = -0.18'
- 8" PIPE Inv. = 1.74'
- 8" PIPE Inv. = 1.74'
- 8" PIPE Inv. = 1.74'
- 8" PIPE Inv. = 2.21'
- 8" PIPE Inv. = 2.20'

Bore Runs

- ① 380' : 1-2" HDPE (FIBER OPTICS) AND 1-2" HDPE (STREET LIGHTS)
- ② 387' : 1-2" HDPE (FIBER OPTICS) AND 1-2" HDPE (STREET LIGHTS)
- ③ 307' : 1-2" HDPE (FIBER OPTICS) AND 1-2" HDPE (STREET LIGHTS)
- ④ 100' : 2-2" HDPE (STREET LIGHTS)
- ⑤ 460' : 1-2" HDPE (FIBER OPTICS) AND 1-2" HDPE (STREET LIGHTS)
- X SEE ADJACENT DWG

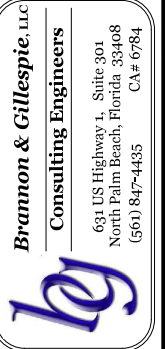


Digitally signed by
Danny P Brannon
Date: 2020.11.16
11:03:13 -05'00'

Danny P. Brannon

DANNY P. BRANNON, P. E.
FLORIDA P. E. NO. 25601

DATE 11/16/2020



BRANNON & GILLESPIE, LLC
CONSULTING ENGINEERS
631 US Highway 1, Suite 301
North Palm Beach, Florida 33408
(561) 847-4485 CA# 6784



Town of Longboat Key

DRAWINGS FOR:
FIBER OPTIC AND STREET LIGHTING UTILITY CONSTRUCTION - PHASE 2
LONGBOAT KEY, FLORIDA

Date: 10/22/2020
Scale: AS NOTED
Drawn: DPB
Checked: DPB
Job # 2014-LBK

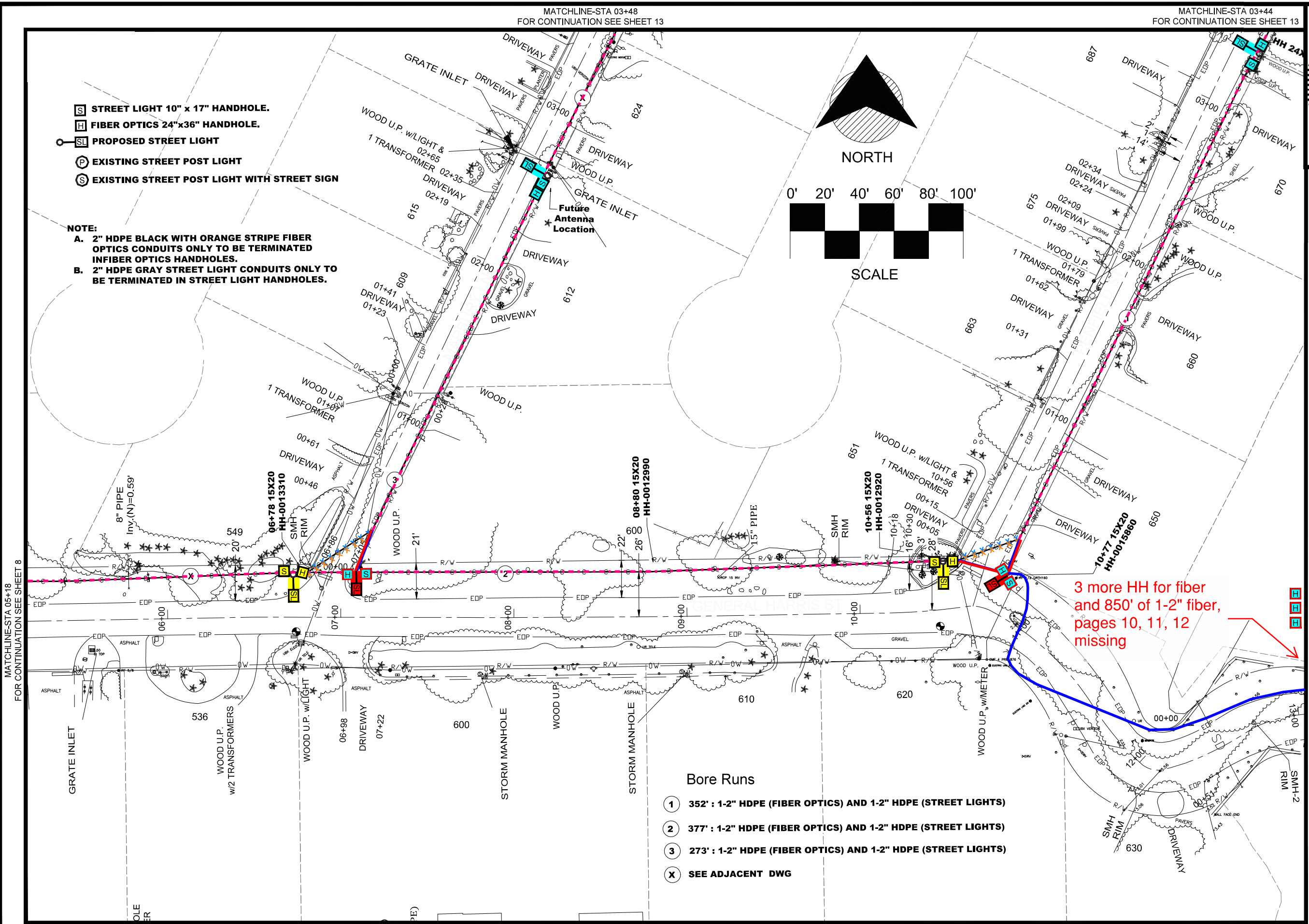
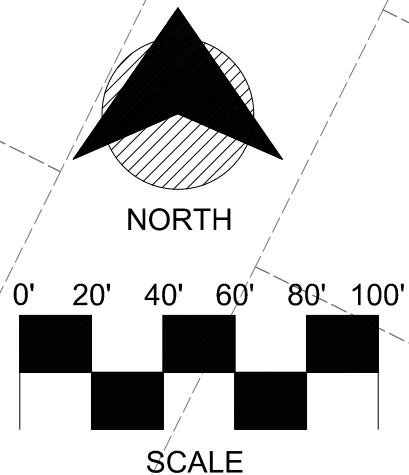
Sheet
C8 OF 46

MATCHLINE-STA 03+48
FOR CONTINUATION SEE SHEET 13

MATCHLINE-STA 03+44
FOR CONTINUATION SEE SHEET 13

- STREET LIGHT 10" x 17" HANDHOLE.
- FIBER OPTICS 24"x36" HANDHOLE.
- PROPOSED STREET LIGHT
- EXISTING STREET POST LIGHT
- EXISTING STREET POST LIGHT WITH STREET SIGN

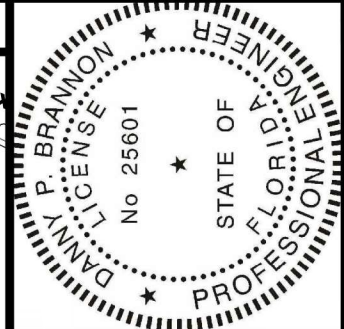
NOTE:
A. 2" HDPE BLACK WITH ORANGE STRIPE FIBER OPTICS CONDUITS ONLY TO BE TERMINATED IN FIBER OPTICS HANDHOLES.
B. 2" HDPE GRAY STREET LIGHT CONDUITS ONLY TO BE TERMINATED IN STREET LIGHT HANDHOLES.



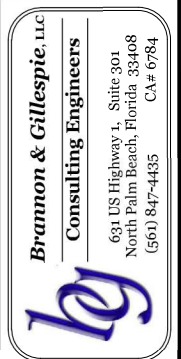
3 more HH for fiber and 850' of 1-2" fiber, pages 10, 11, 12 missing

Bore Runs

- ① 352' : 1-2" HDPE (FIBER OPTICS) AND 1-2" HDPE (STREET LIGHTS)
- ② 377' : 1-2" HDPE (FIBER OPTICS) AND 1-2" HDPE (STREET LIGHTS)
- ③ 273' : 1-2" HDPE (FIBER OPTICS) AND 1-2" HDPE (STREET LIGHTS)
- ⓧ SEE ADJACENT DWG



Digitally signed by
 Danny P Brannon
 Date: 2020.11.16
 11:03:13 -05'00'
 DANNY P. BRANNON, P. E.
 FLORIDA P. E. NO. 25601
 DATE 11/16/2020



BRANNON & GILLESPIE, LLC
 Consulting Engineers
 631 US Highway 1, Suite 301
 North Palm Beach, Florida 33408
 (561) 847-4485 CA# 6784
LONGBOAT KEY, FLORIDA

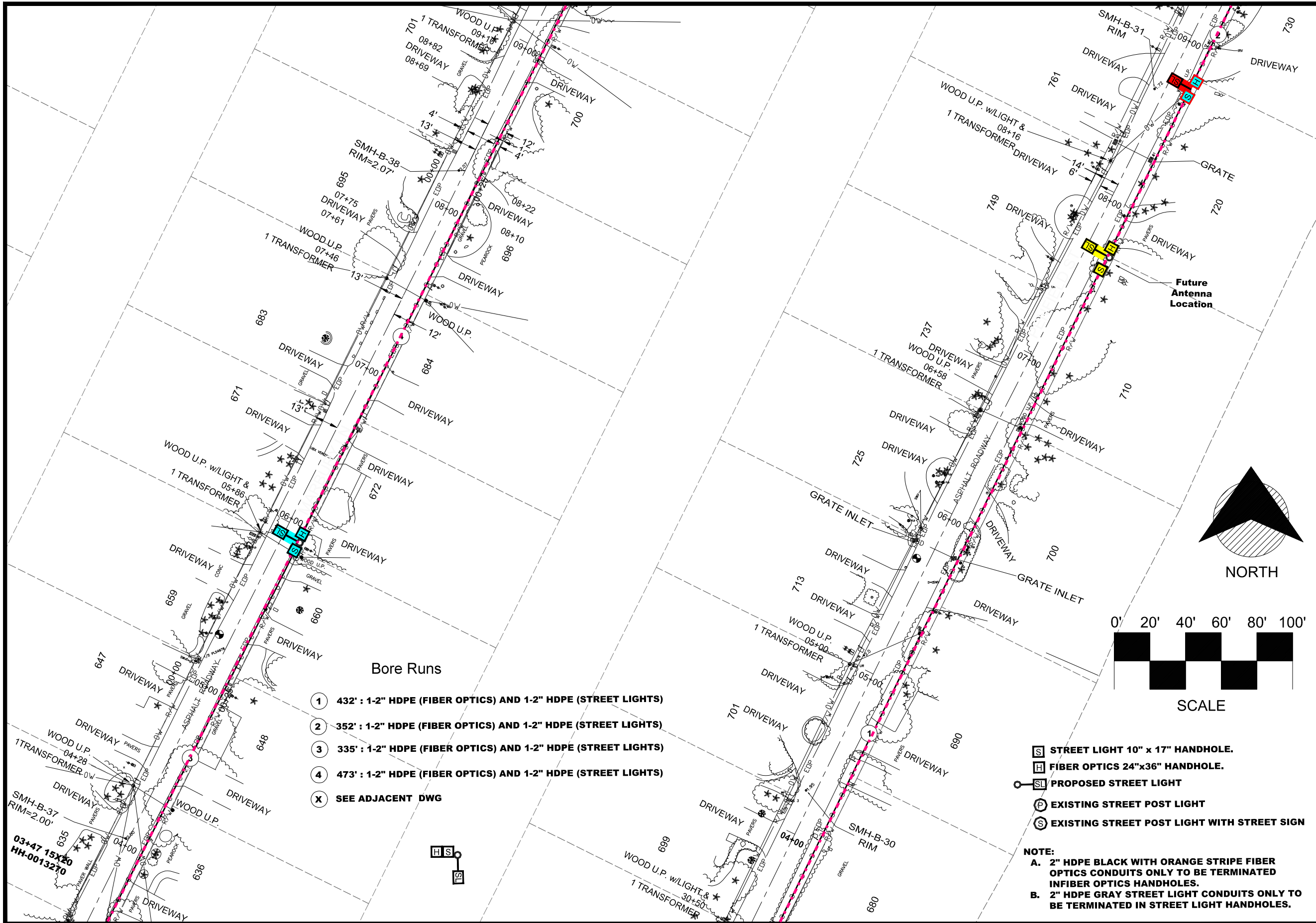
Town of Longboat Key



Drawings for:
FIBER OPTIC AND STREET LIGHTING UTILITY CONSTRUCTION - PHASE 2
 Date: 10/22/2020
 Scale: AS NOTED
 Drawn: DPB
 Checked: DPB
 Job #: 2014-LBK
 Sheet

MATCHLINE-STA 09+25
FOR CONTINUATION SEE SHEET 14

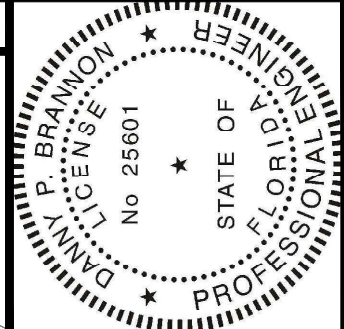
MATCHLINE-STA 09+20
FOR CONTINUATION SEE SHEET 14



- Bore Runs**
- ① 432' : 1-2" HDPE (FIBER OPTICS) AND 1-2" HDPE (STREET LIGHTS)
 - ② 352' : 1-2" HDPE (FIBER OPTICS) AND 1-2" HDPE (STREET LIGHTS)
 - ③ 335' : 1-2" HDPE (FIBER OPTICS) AND 1-2" HDPE (STREET LIGHTS)
 - ④ 473' : 1-2" HDPE (FIBER OPTICS) AND 1-2" HDPE (STREET LIGHTS)
 - X SEE ADJACENT DWG

- [S] STREET LIGHT 10" x 17" HANDHOLE.
- [H] FIBER OPTICS 24"x36" HANDHOLE.
- [SL] PROPOSED STREET LIGHT
- [P] EXISTING STREET POST LIGHT
- [S] EXISTING STREET POST LIGHT WITH STREET SIGN

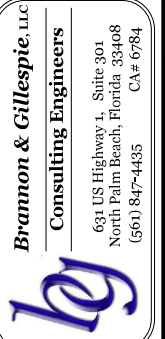
NOTE:
 A. 2" HDPE BLACK WITH ORANGE STRIPE FIBER OPTICS CONDUITS ONLY TO BE TERMINATED IN FIBER OPTICS HANDHOLES.
 B. 2" HDPE GRAY STREET LIGHT CONDUITS ONLY TO BE TERMINATED IN STREET LIGHT HANDHOLES.



Digitally signed by
 Danny P Brannon
 Date: 2020.11.16
 11:03:13 -05'00'

DANNY P. BRANNON, P. E.
 FLORIDA P. E. NO. 25601
 DATE 11/16/2020

Town of Longboat Key



BRANNON & GILLESPIE, LLC
 Consulting Engineers
 631 US Highway 1, Suite 301
 North Palm Beach, Florida 33408
 (561) 847-4435 CA# 6784

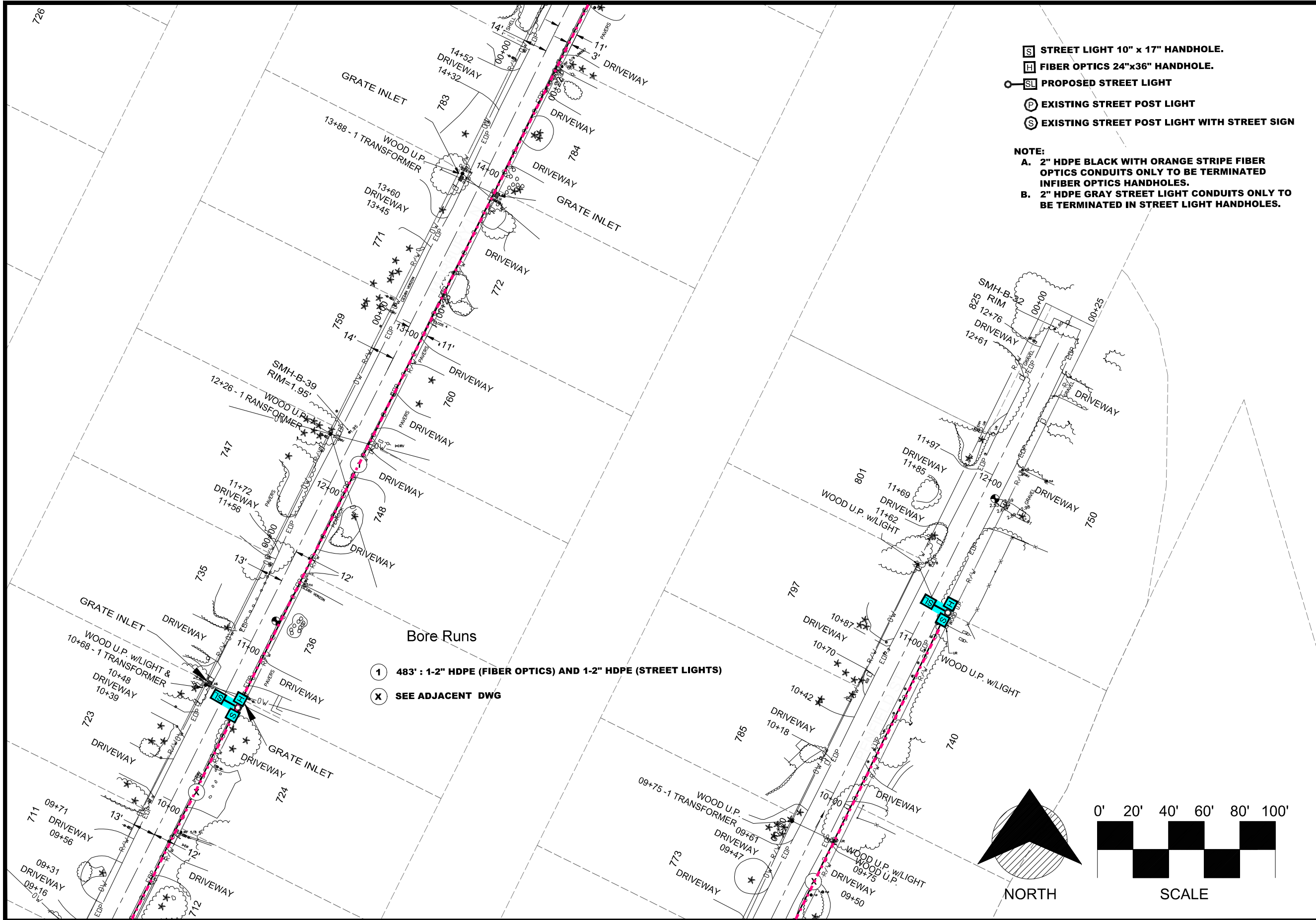


Date:	10/22/2020
Scale:	AS NOTED
Drawn:	DPB
Checked:	DPB
Job #	2014-LBK
Sheet	

MATCHLINE-STA 03+48
FOR CONTINUATION SEE SHEET 9

MATCHLINE-STA 03+44
FOR CONTINUATION SEE SHEET 9

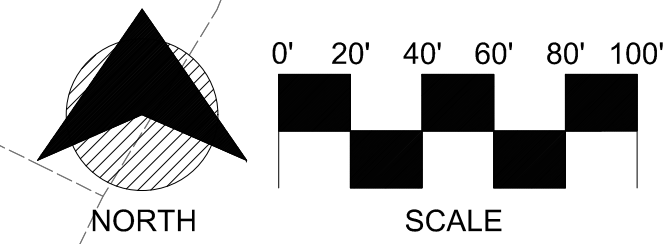
MATCHLINE-STA 15+01
FOR CONTINUATION SEE SHEET 15



- STREET LIGHT 10" x 17" HANDHOLE.
- FIBER OPTICS 24"x36" HANDHOLE.
- PROPOSED STREET LIGHT
- EXISTING STREET POST LIGHT
- EXISTING STREET POST LIGHT WITH STREET SIGN

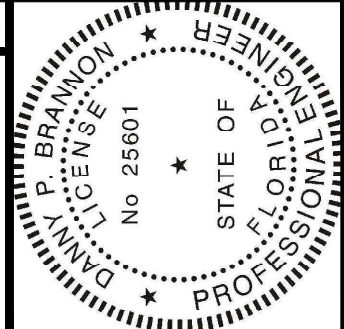
NOTE:
A. 2" HDPE BLACK WITH ORANGE STRIPE FIBER OPTICS CONDUITS ONLY TO BE TERMINATED IN FIBER OPTICS HANDHOLES.
B. 2" HDPE GRAY STREET LIGHT CONDUITS ONLY TO BE TERMINATED IN STREET LIGHT HANDHOLES.

- 483' : 1-2" HDPE (FIBER OPTICS) AND 1-2" HDPE (STREET LIGHTS)
- SEE ADJACENT DWG



MATCHLINE-STA 09+25
FOR CONTINUATION SEE SHEET 13

MATCHLINE-STA 09+20
FOR CONTINUATION SEE SHEET 13



Digitally signed by
 Danny P Brannon
 Date: 2020.11.16
 11:03:13 -05'00'

Danny P. Brannon

DANNY P. BRANNON, P. E.
 FLORIDA P. E. NO. 25601

DATE 11/16/2020

Town of Longboat Key



BRANNON & GILLESPIE, LLC
 Consulting Engineers
 631 US Highway 1, Suite 301
 North Palm Beach, Florida 33408
 (561) 847-4435 CA# 6784



Drawings for:
FIBER OPTIC AND STREET LIGHTING UTILITY CONSTRUCTION - PHASE 2
 LONGBOAT KEY, FLORIDA

Date: 10/22/2020
 Scale: AS NOTED
 Drawn: DPB
 Checked: DPB
 Job #: 2014-LBK
 Sheet